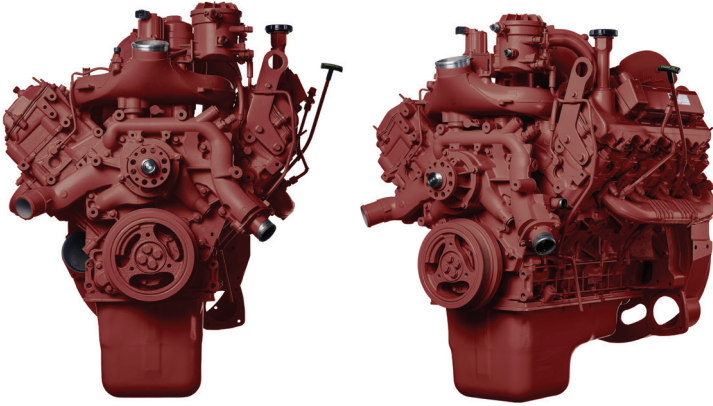


International® VT365 Diesel Engine



LONG BLOCK INCLUDES:

- Block
- Camshaft
- Timing gears
- Lifters
- Piston cooling tubes
- Valve train
- Oil pan & pick-up tube
- Oil cooler
- Water pump
- Valve covers
- Crankshaft
- Pistons/rings
- Connecting rods
- Main/rod bearings
- Cam bearings
- Cylinder heads/valves
- Oil pump
- Front cover
- Rear cover/flywheel housing
- Oil filter canister

LONG BLOCK SUPREME INCLUDES:

ALL PARTS ON THE LONG BLOCK PLUS

- Injectors
- Glow plugs
- High pressure oil pump
- Crankshaft position sensor
- Engine oil pressure sensor
- EOT-Engine oil temperature sensor
- ICP Injection control pressure sensor
- High pressure oil rails
- Vibration damper
- Injection pressure regulator valve
- Camshaft position sensor

COMPLETE DROP-IN ENGINE INCLUDES:

ALL PARTS ON THE LONG BLOCK SUPREME PLUS

- Intake Manifold
- Turbo Exhaust Piping
- EGR Cooler
- EGR Valves
- Intake air temperature sensor
- Intake air pressure sensor
- Exhaust back pressure sensor
- Exhaust Manifold
- Turbocharger
- Dipstick Tube & Dipstick

IMPORTANT INSTALLATION INFORMATION

EGR Cooler must be tested and/or replaced to activate warranty.

APPLICATIONS

Reviva's VT365 diesel engines are configured for International delivery trucks, garbage trucks, dump trucks and school buses.

ABOUT THE REVIVA VT365

- All Reviva engines are assembled in the USA.
- Blocks, heads and crankshafts are 100% magnaflux tested to avoid cracked components.
- Crankshaft is checked for size, reground, if necessary, and micropolished to OEM specifications.
- Camshaft is checked for wear, reground as necessary, and micropolished to OEM specifications.
- Connecting rods have new bushings installed and both large and small end are remachined to OEM specifications.
- All connecting rods are de-magnetized.
- All heads get new valves and are vacuum tested to ensure the quality of the valve job. All heads are pressure tested.
- Core plugs are 100% stainless steel to avoid corrosion.
- Reviva replaces 100% internal wear items including rings, bearings, bushings, gaskets and seals.

REVIVA'S DYNO TEST

All of Reviva's Complete Drop-In engines are 100% dyno tested prior to shipment. Computer controls ensure that each engine dyno test is conducted under standard, repeatable settings. Every engine is run through a warm up cycle, three separate segments simulating light, medium and heavy throttle conditions; maximum torque and horsepower tests; both high and low idle tests; and a black light leak detection test with dyed oil, coolant and fuel.

WARRANTY COVERAGE

On-Road Complete Drop-In configurations: 2yr/unlimited mileage.*
Long Block configurations: 1 year/unlimited mileage.

*Some restrictions apply; see limited warranty details or call for more information.
2nd year long block coverage only.

©2017 Reviva, All Rights Reserved.
Reviva is an independent manufacturer and is not affiliated with Navistar, Ford, Cummins, General Motors, or Caterpillar.

ISSUE: VT365-B