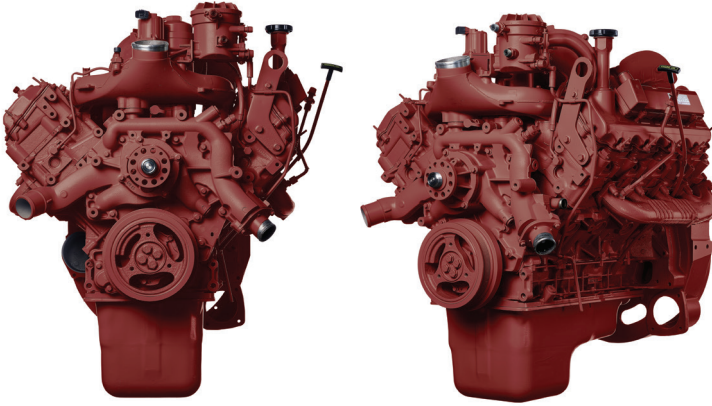


International® VT365 Diesel Engine



LONG BLOCK INCLUDES:

- Block
- Camshaft
- Timing gears
- Lifters
- Piston cooling tubes
- Valve train w/ drilled rocket arms
- Oil pan & pick-up tube
- Oil cooler
- Water pump
- Valve covers
- Crankshaft
- Pistons/rings
- Connecting rods
- Main/rod bearings
- Cam bearings
- Cylinder heads/valves
- Oil pump
- Front cover
- Rear cover/flywheel housing
- Oil filter canister

LONG BLOCK SUPREME INCLUDES:

ALL PARTS ON THE LONG BLOCK PLUS

- Injectors
- Glow plugs
- High pressure oil pump
- Crankshaft position sensor
- Engine oil pressure sensor
- EOT-Engine oil temperature sensor
- ICP Injection control pressure sensor
- High pressure oil rails
- Vibration damper
- Injection pressure regulator valve
- Camshaft position sensor

COMPLETE DROP-IN ENGINE INCLUDES:

ALL PARTS ON THE LONG BLOCK SUPREME PLUS

- Intake manifold
- Turbo exhaust piping
- **Bullet Proof® EGR Cooler**
- EGR Valves
- Intake air temperature sensor
- Intake air pressure sensor
- Exhaust back pressure sensor
- Exhaust manifold
- Turbocharger
- Dipstick tube & dipstick

IMPORTANT INSTALLATION INFORMATION

EGR Cooler must be tested and/or replaced to activate warranty on all long block and long block supremes.

APPLICATIONS

Reviva's VT365 diesel engines are configured for International delivery trucks, garbage trucks, dump trucks and school buses.

ABOUT THE REVIVA VT365

- All Reviva engines are assembled in the USA.
- Blocks, heads and crankshafts are 100% magnaflux tested to avoid cracked components.
- Crankshaft is checked for size, reground, if necessary, and micropolished to OEM specifications.
- Camshaft is checked for wear, reground as necessary, and micropolished to OEM specifications.
- Connecting rods have new bushings installed and both large and small end are remachined to OEM specifications.
- All connecting rods are de-magnetized.
- All heads get new valves and are vacuum tested to ensure the quality of the valve job. All heads are pressure tested.
- Core plugs are 100% stainless steel to avoid corrosion.
- Reviva replaces 100% internal wear items including rings, bearings, bushings, gaskets and seals.

REVIVA'S DYNO TEST

All of Reviva's Complete Drop-In engines are 100% dyno tested prior to shipment. Computer controls ensure that each engine dyno test is conducted under standard, repeatable settings. Every engine is run through a warm up cycle, three separate segments simulating light, medium and heavy throttle conditions; maximum torque and horsepower tests; both high and low idle tests; and a black light leak detection test with dyed oil, coolant and fuel.

WARRANTY COVERAGE

On-Road Complete Drop-In configurations: 2yr/unlimited mileage.*

Long Block configurations: 1 year/unlimited mileage.

Some restrictions apply; see limited warranty details or call for more information.

**2nd year long block coverage only.*

©2017 Reviva, All Rights Reserved.

Reviva is an independent manufacturer and is not affiliated with Navistar, Ford, Cummins, General Motors, or Caterpillar.

ISSUE: VT365-C