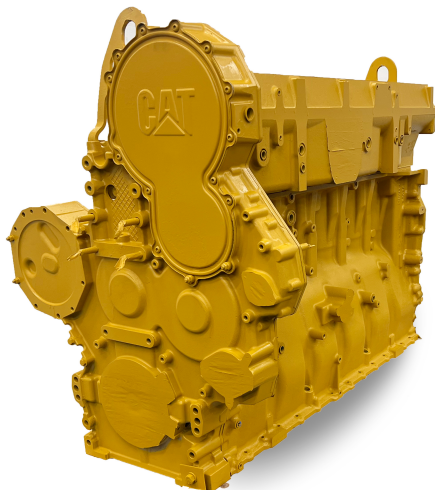


## Caterpillar® C-15/C15 Acert Diesel Engine



### LONG BLOCK INCLUDES:

- Block
- Crankshaft
- Cylinder Head
- Camshaft
- Front Plate
- Timing Gears
- Front Gear Housing
- Pistons
- Rods
- Front Cover
- Oil Cooler Core (Shipped Loose)
- Water Pump (Shipped Loose)
- Oil Pump (Shipped Loose)

### WARRANTY COVERAGE

Long Block configurations: 1 year/unlimited mileage.

Off-Road All configurations: 1 year/2,000 hours

*Some restrictions apply; see limited warranty details or call for more information.*

### CORE RETURN CRITERIA

- If there are visual holes or cracks in the block there will be a 50% core charge back.
- Core charges are refunded within 48-hours after Reviva receives your core.
- Crank must rotate.

\*\*\*\* Round-trip freight prepaid within the Continental US\*\*\*

### APPLICATIONS

The Cat C15 Acert is used in many applications of industrial equipment for model years 2000's and up. The C-15 is widely used in heavy-duty applications like construction equipment, agricultural machinery, mining operations, power generation, and large trucks for model years 1999-2007.

Reviva utilizes state of the art machines and machining methods to ensure quality. All components are magnafluxed, inspected and machined to OEM specifications.

Blocks are magnafluxed, upper & lower counter bores are repaired as needed, the deck is resurfaced and the align bore is honed to OEM specifications.

Cylinder heads are magnafluxed, pressure tested, and new valve guides and new valves are installed in every head and valve seats are machined to OEM specs then vacuum tested to ensure quality.

Crankshafts are magnafluxed, straightened if needed and polished or ground undersized.

Connecting rods are magnafluxed new rod bushing installed and machined to OEM specification.

All Reviva engines are assembled in the USA.

### TO PLACE AN ORDER

Before calling to request price and availability, please gather the following information:

- The original machine serial number
- The original engine serial number
- The original engine AR number

The AR and serial numbers are located on the valve cover.

### QUALITY PROCESSES

Every engine is machined using state-of-the-art equipment and assembled using precise and repeatable methods. All engine production follows documented lean manufacturing processes and principles to create consistent quality and dependable outcomes.

©2022 Reviva. All Rights Reserved. Reviva is an independent manufacturer and is not affiliated with Navistar, Ford, Cummins, General Motors, Mercedes-Benz or Caterpillar.