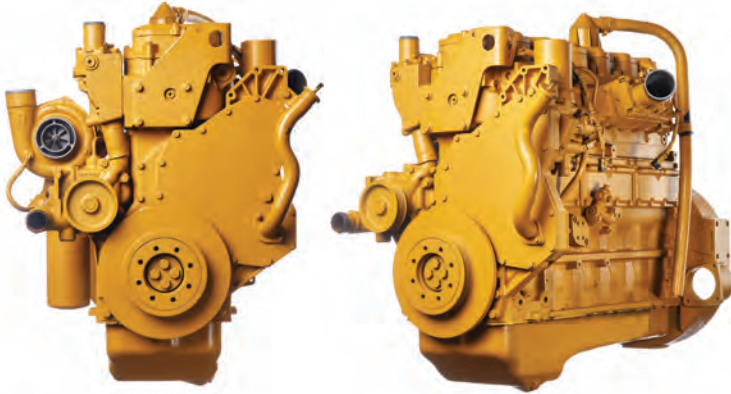


Caterpillar® 3126 and C7 Diesel Engines



LONG BLOCK INCLUDES:

- Block
- Rods
- Piston assemblies
- Cylinder head
- Gear housing & front seal
- Oil cooler
- Crankshaft
- Valve train
- Camshaft
- Gasket set
- Oil pump

LONG BLOCK SUPREME INCLUDES:

ALL PARTS ON THE LONG BLOCK PLUS

- Front cover
- Oil pan
- Flywheel housing

***INJECTORS CAN BE ADDED FOR ADDITIONAL COST UPON REQUEST**

COMPLETE DROP-IN ENGINE INCLUDES:

ALL PARTS ON THE LONG BLOCK SUPREME PLUS

- Intake manifold
- Damper
- Injection pump & lines
- Exhaust manifolds
- Injectors
- Valve cover
- Water pump & pulley
- Turbocharger
- High pressure pump

ELECTRONIC COMPLETE ENGINES WILL ALSO INCLUDE:

- Injection pressure sensor
- Boost pressure sensor
- Engine timing & speed sensor
- Coolant temperature sensor
- Air temperature sensor
- Atmospheric sensor

APPLICATIONS/ENGINE IDENTIFICATION

Reviva's Caterpillar diesel engines are available for many class 6-8 truck, bus, vocational, and industrial applications. Reviva's long block and drop-in engines are available for years 1996 and up for the 3126 and C7 families. To determine correct part number and configurations available, please gather the following information from the engine data tag on the valve cover:

- Engine Serial Number (Format 7AS OR WAX...)
- Engine Arrangement Number (Format 108-5291)
- Engine Model Year
- Vehicle: Year, Make, Model

ABOUT THE REVIVA 3126/C7

- All Reviva engines are assembled in the USA.
- Reviva replaces 100% of rings, bearings, bushings, gaskets and seals.
- Reviva matched OEM requirements for piston type depending upon HP and application.
- All heads get new valves and are vacuum tested to ensure the quality of the valve job. All heads are pressure tested and upgraded to the latest style valve seal.
- Cylinder head seats replaced 100% new.
- Camshafts are checked for size, reground, if necessary, and micro-polished to OEM specifications.
- All connecting rods are de-magnetized.
- Core plugs are 100% stainless steel to avoid corrosion.
- Blocks, heads and crankshafts are 100% magnaflux tested to avoid cracked components.
- Connecting rods have new bushings installed and both large and small end are re-machined to OEM specifications.
- Crankshaft is checked for size, reground, if necessary, and micro-polished to OEM specifications.

REVIVA'S TESTING

All of Reviva's Long Block engines are 100% SIM tested prior to shipment.

All of Reviva's Drop-In engines are 100% Dyno tested prior to shipment.

WARRANTY COVERAGE

On-Road Complete Drop-In configurations: 2 year/unlimited mileage.*
Long Block configurations: 1 year/unlimited mileage.
Off-Road Complete Drop-In configurations: 1 year/2,000 hours.

*Some restrictions apply; see limited warranty details or call for more information.
2nd year long block coverage only.

©2022 Reviva, All Rights Reserved. Reviva is an independent manufacturer and is not affiliated with Navistar, Ford, Cummins, General Motors, Mercedes-Benz or Caterpillar.

ISSUE: 3126-E