

## COMPLETE DROP-IN INCLUDES:

- Block
- Rods
- Piston assemblies
- Timing gears
- Pickup tube
- Dipstick & dipstick guide
- Flywheel housing
- Water pump
- Oil pan
- Oil cooler
- Front cover & seal
- Valve train (lifters, pushrods & rocker arms)
- Crankshaft
- Oil pump
- Camshaft
- Valve covers
- Complete fuel system
- Fuel filter assembly
- Front damper
- Intake manifold
- Exhaust manifolds
- Oil filter
- Heads
- Turbocharger\*
- EGR assembly\*

\*Where applicable

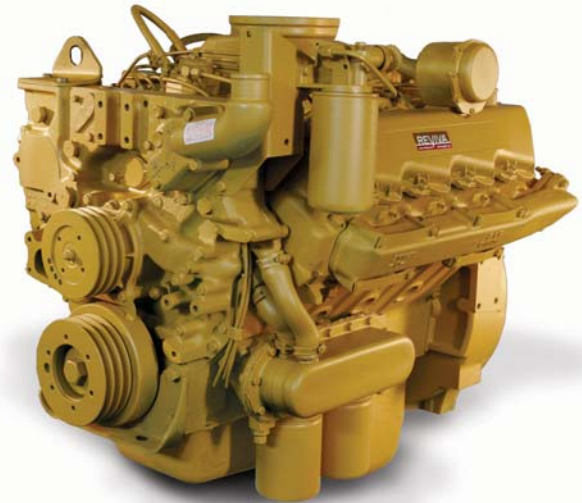
## MARINE LONG BLOCK (NOT PICTURED):

- Block
- Rods
- Piston assemblies
- Valve train (lifters, pushrods & rocker arms)
- Crankshaft
- Camshaft
- Cylinder Heads
- Oil Cooler
- Water Pump

## TO ORDER

Before calling to request price and availability, please gather the following information from the data tag located on the valve cover:

- Serial number
- Arrangement number
- Vehicle/equipment make and model
- Sump location (front, rear, center)



Caterpillar 3208 Turbo

All Reviva Engines are Assembled in the USA.

## 3208 ENGINE APPLICATIONS

Caterpillar 3208 engines are used in many work applications such as delivery trucks, dump trucks, garbage trucks, snow plows, flatbed trucks and school buses. The 3208 is also used in many agricultural and industrial applications such as lift trucks, ag sprayers, cranes, power units, generator sets, tractors, excavators, wheel loaders, compactors, articulated trucks and backhoes. Reviva can also supply a marine engine in a long block configuration.

## CUSTOM CONFIGURATION

Reviva will custom build many Caterpillar 3208 engines. Reviva has now added custom build engines for the higher (above 250HP) horsepower units. For more information contact Reviva at 877-357-7634.



## Warranty Coverage

On-Road Complete Drop-In configurations: 2yr/unlimited mileage. 2nd year long block coverage only.  
Transit applications 1 year. Off-Road Complete Drop-In configurations: 1yr/2,000 hours.  
Long Blocks (all): 1 year. Marine Applications: 1year/2,000 hours.

Some restrictions apply; see limited warranty details or call for more information.